

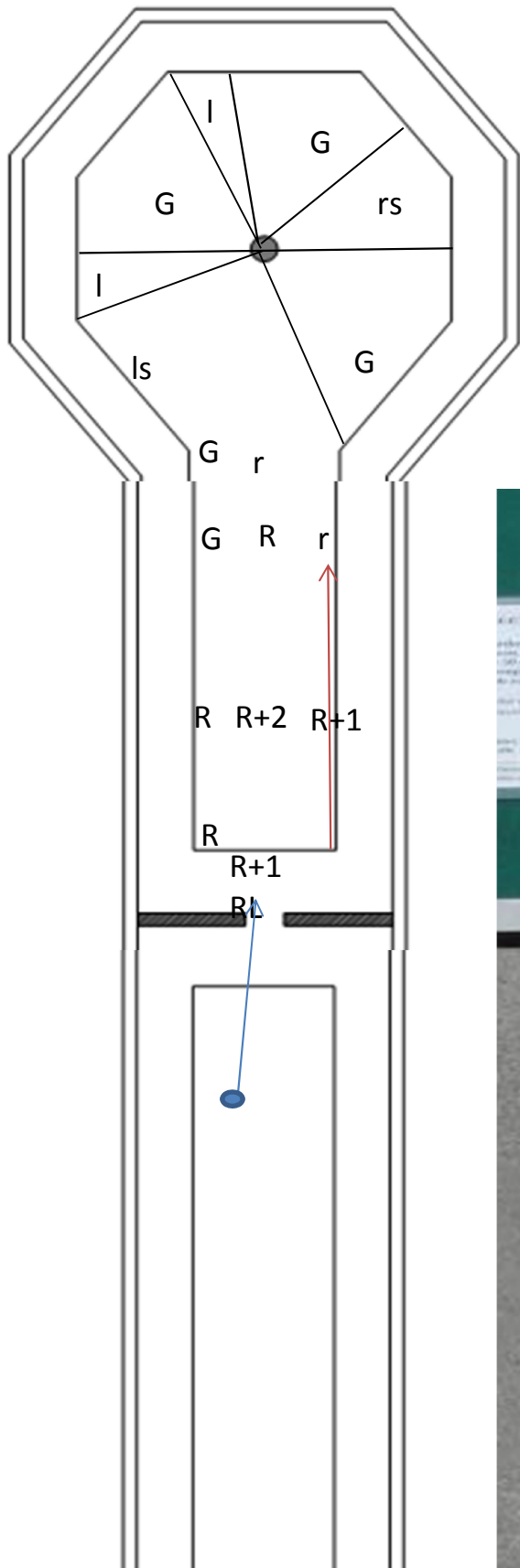
# Lahti - Filz Bahneninfos



**Senioren  
Swiss - Team  
2016**

# Einfachtor

Bahn	1
------	---



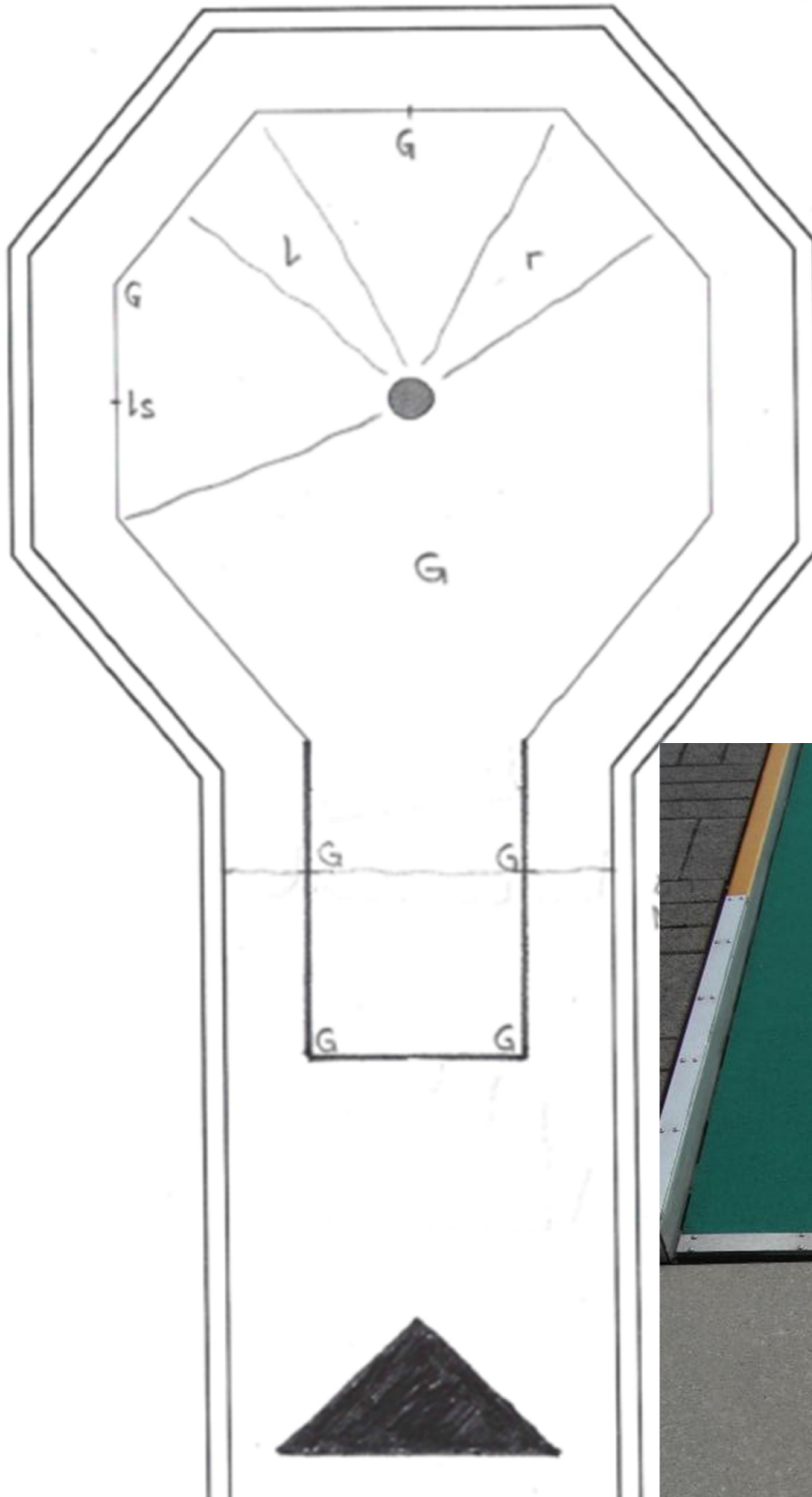
# Flipper

Bahn	2
------	---



# Seitentor (steigend)

Bahn	3
------	---



# Optische

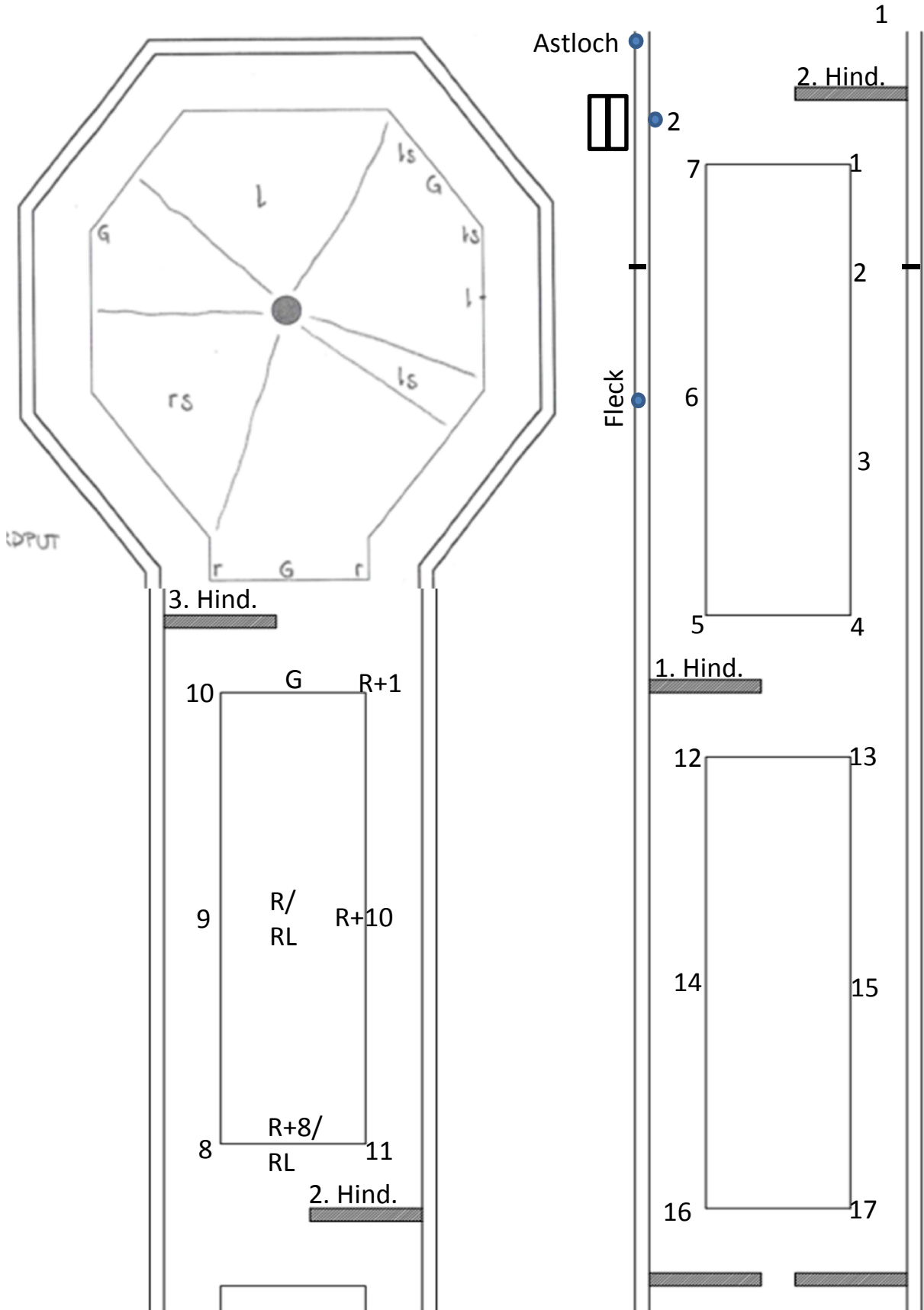
**Bahn****4**

- 1 Astloch nach 3. Hindernis
  - 2 Mitte Querplatte vor Hindernis
  - 3 5cm nach Bandenstoss
  - 4 Mitte Querplatte nach Fleck
  - 5 RL via Langbande
  - 6 RL via Langbande
  - 7 Querplatte (Mitte) vor roter Platte
  - 8 Ende rote Platte
  - 9 15 cm vor Hindernis
  - 10 10 - 12 cm vor Kreis
  - 11 knapp rechts der Linie entlang
  - 12 Ende Querplatte nach Hindernis
  - 13 3/4 links durch Hindernis
  - 14 Anfang Querplatte vor Hindernis
  - 15 knapp am Hindeernis vorbei - langsam
  - 16 Mitte der Längsplatte zw. roter Platte
  - 17 zum Standardput freilegen
- S** Standard-Put



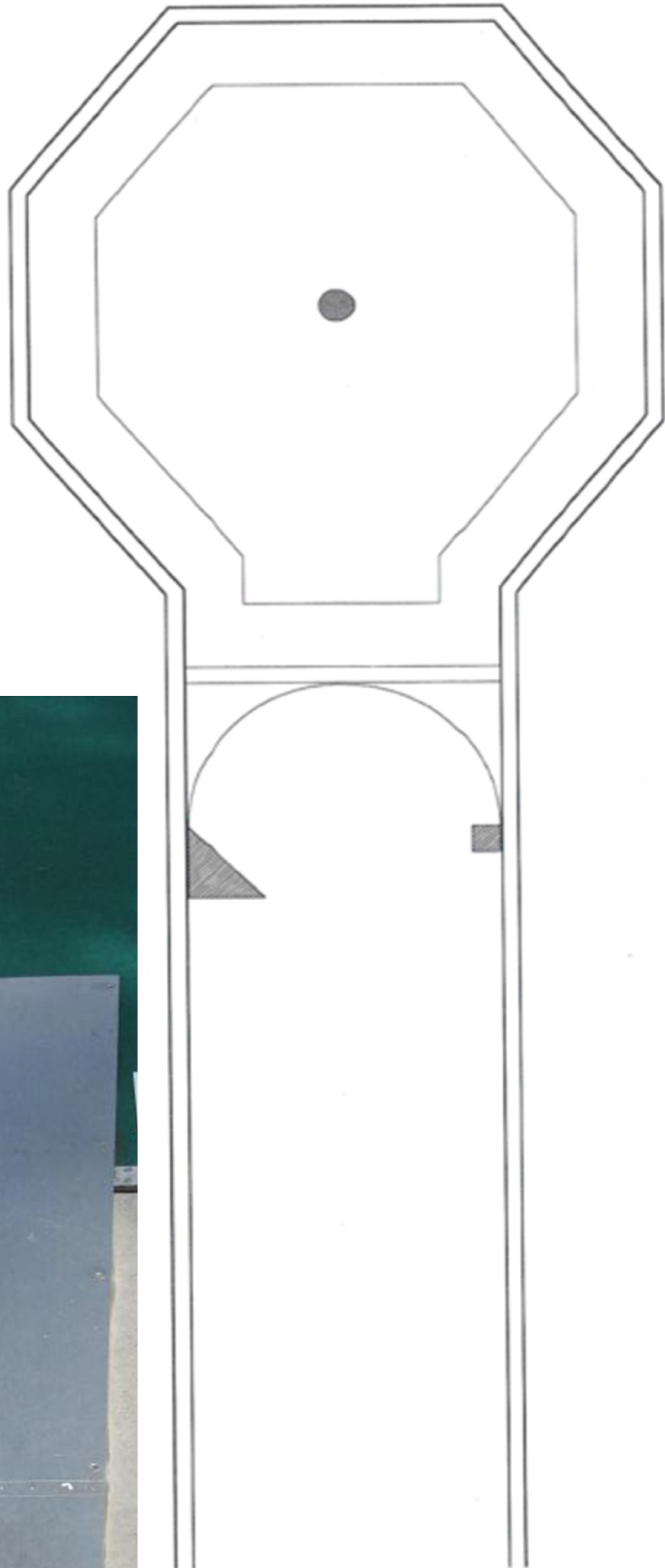
# Optische

Bahn 4



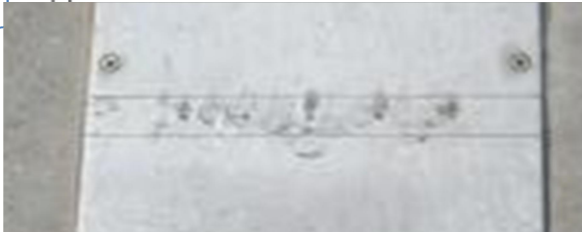
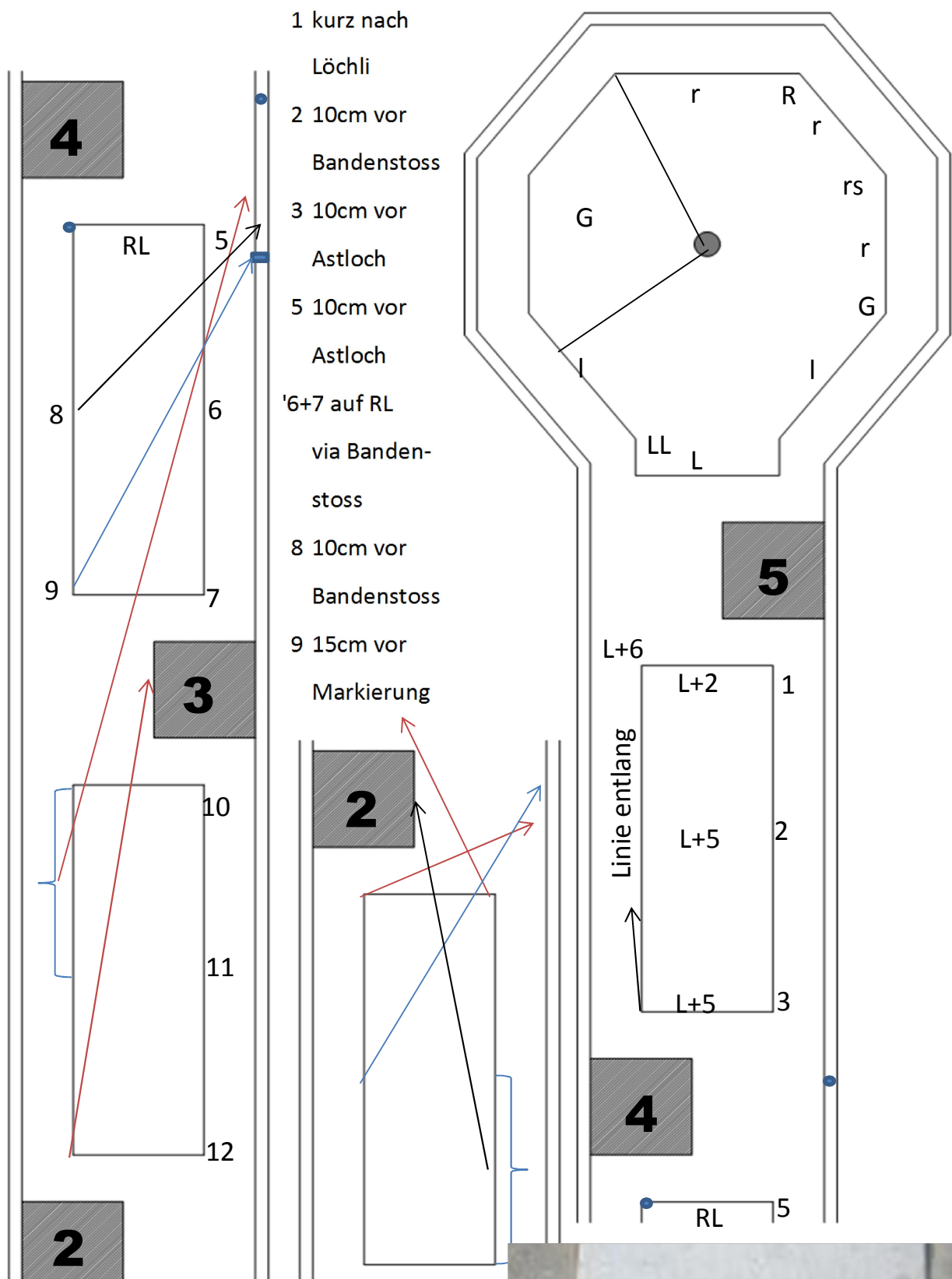
# Seitenloch in Steigung

Bahn	5
------	---



# Kastenbahn

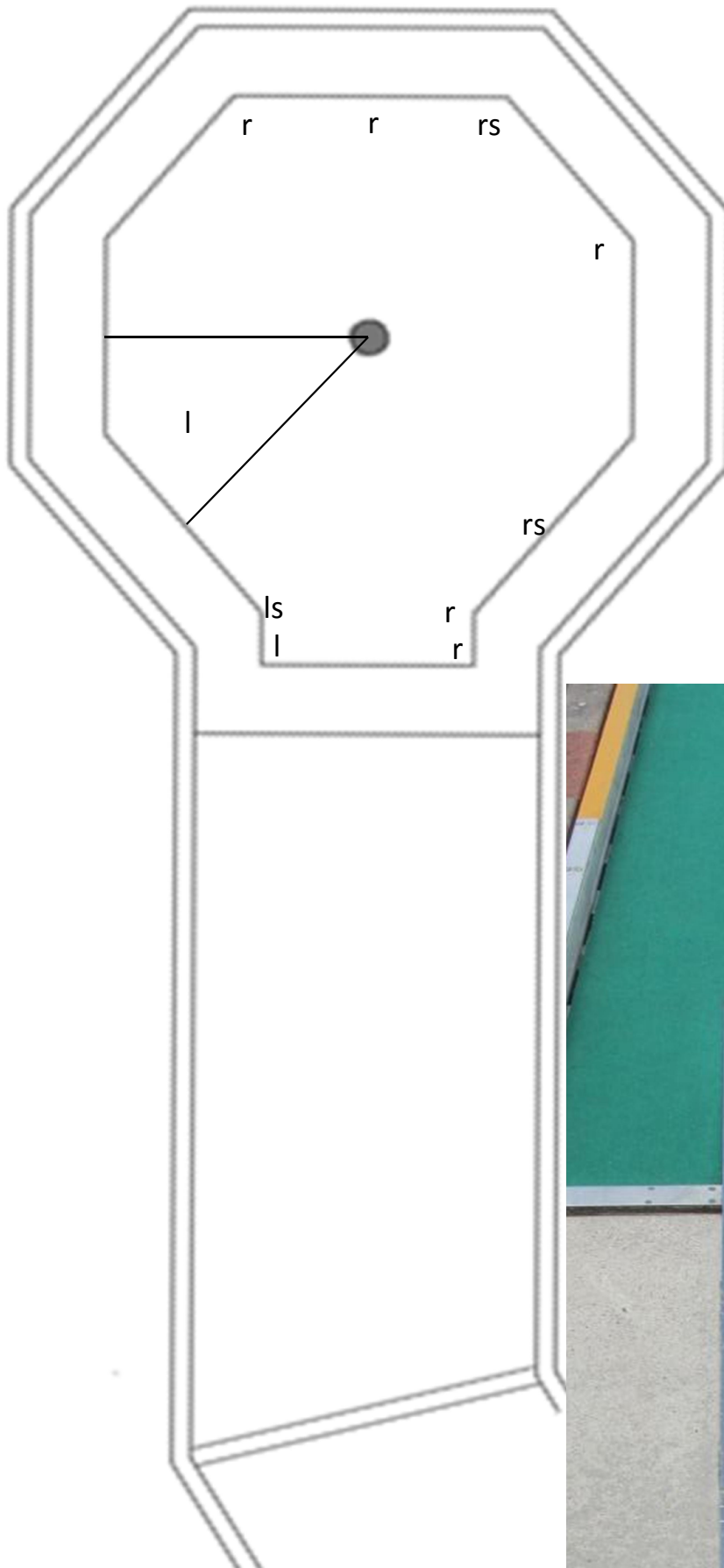
## Bahn 6





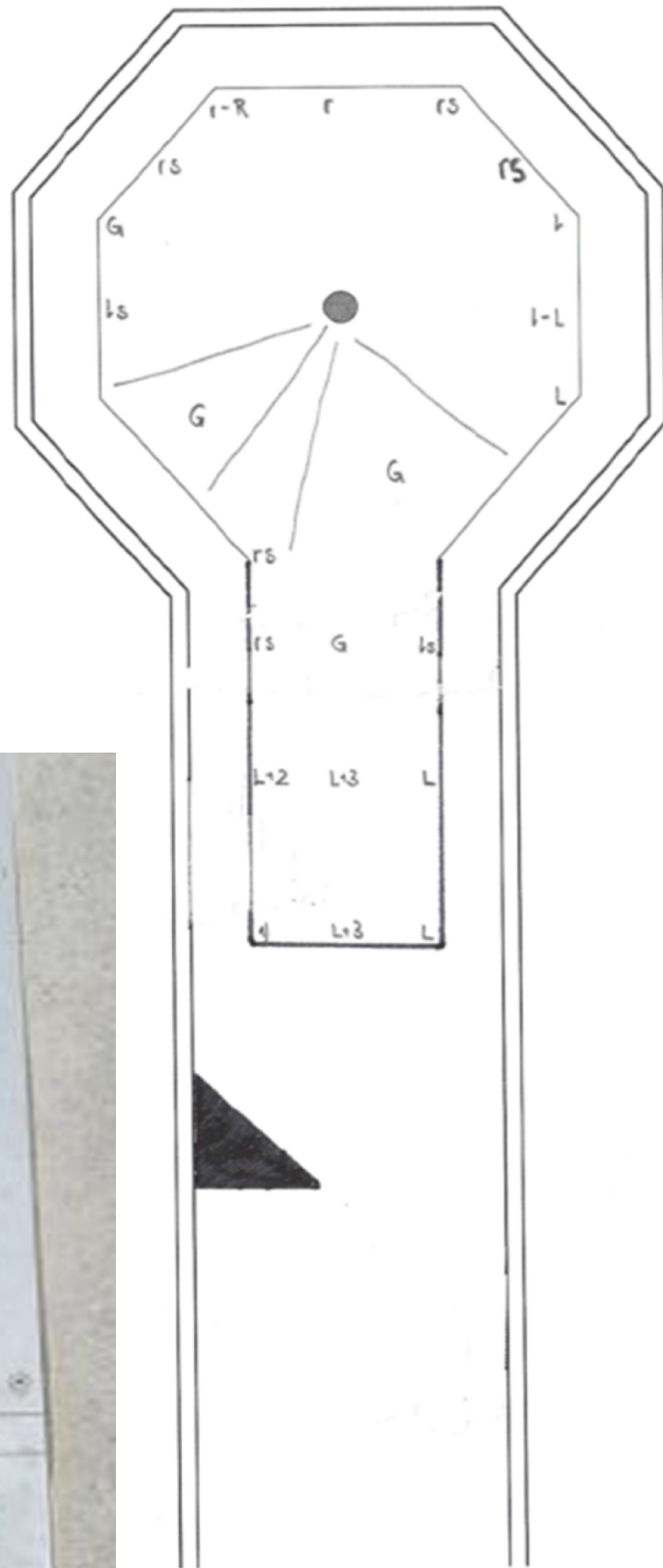
# Wixxknick

Bahn	7
------	---



# Fischgräte

Bahn 8

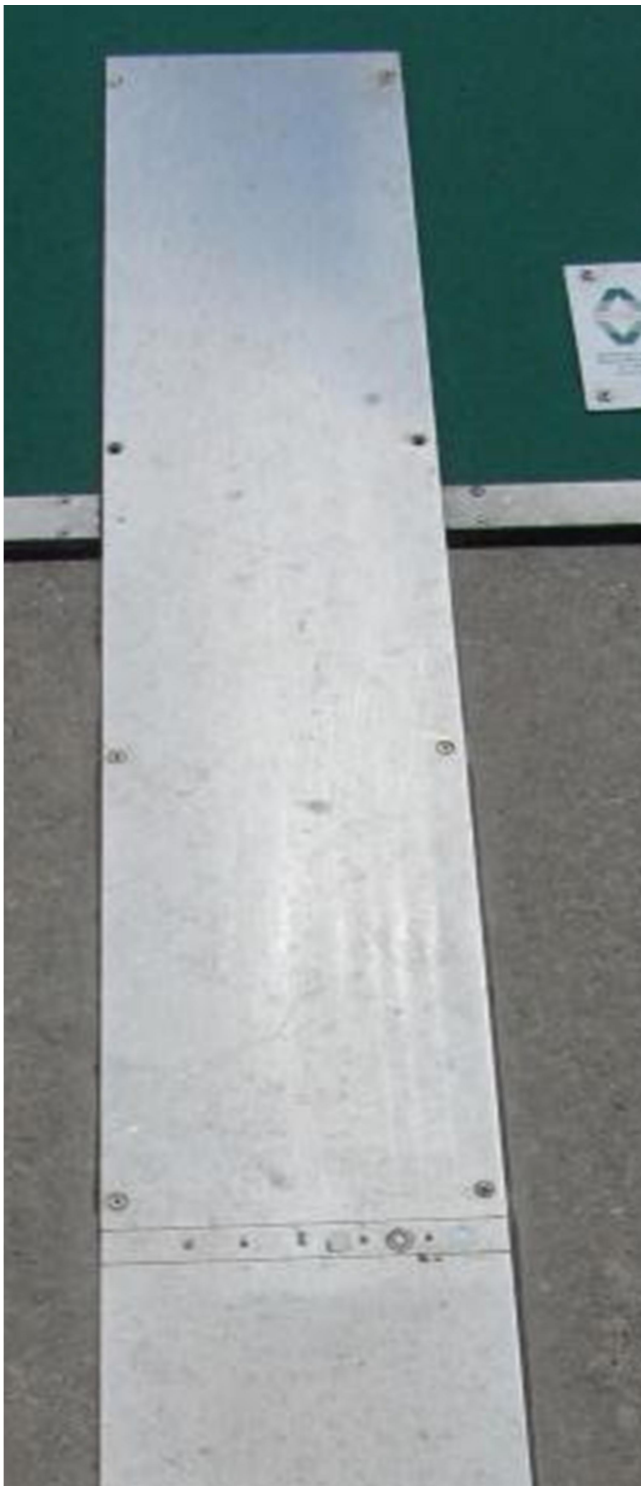
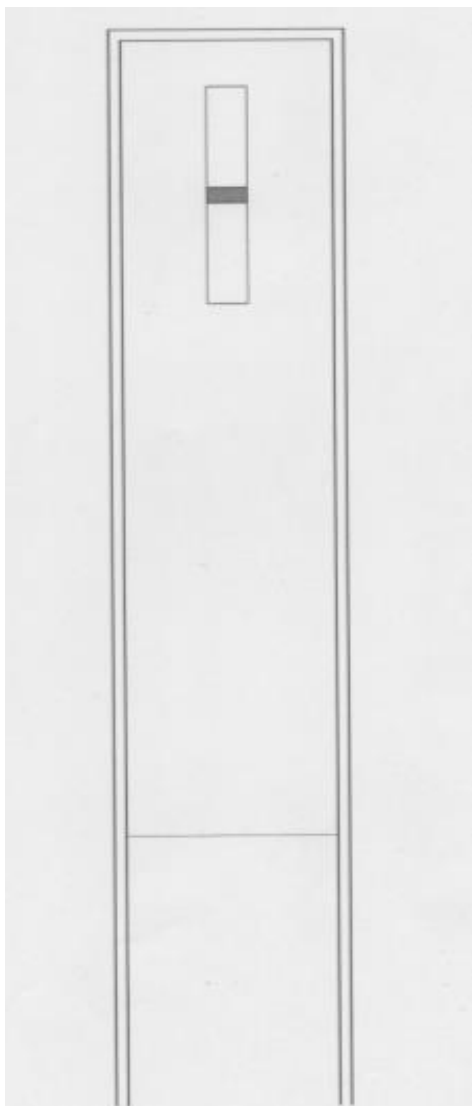


1) ENTLANG DER  
LINIE SPIELEN



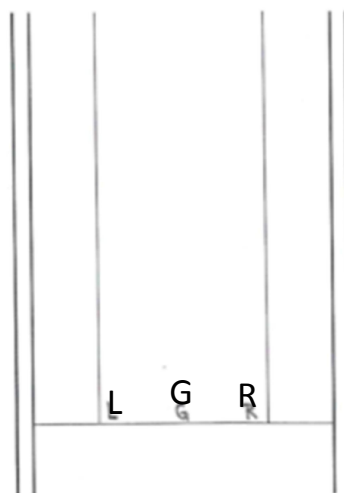
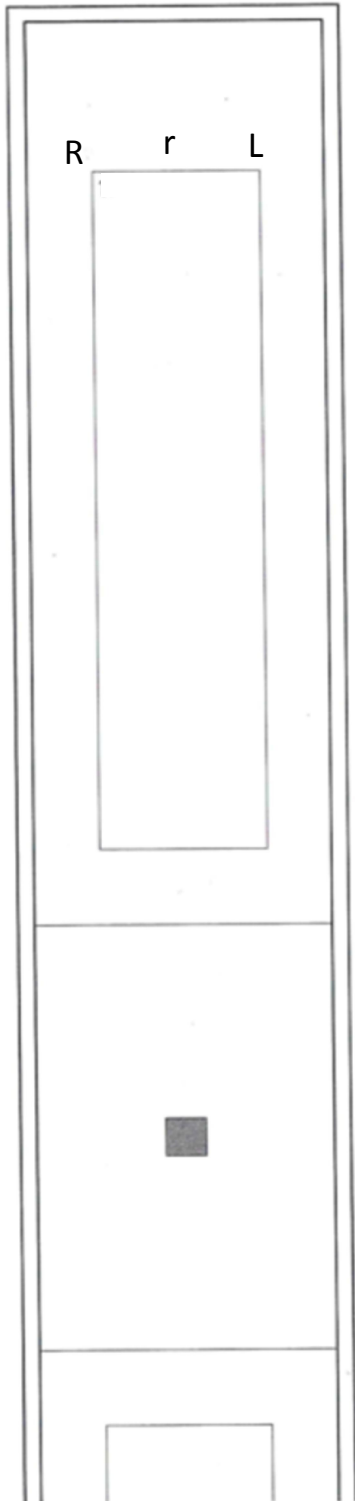
Örkel

Bahn	9
------	---



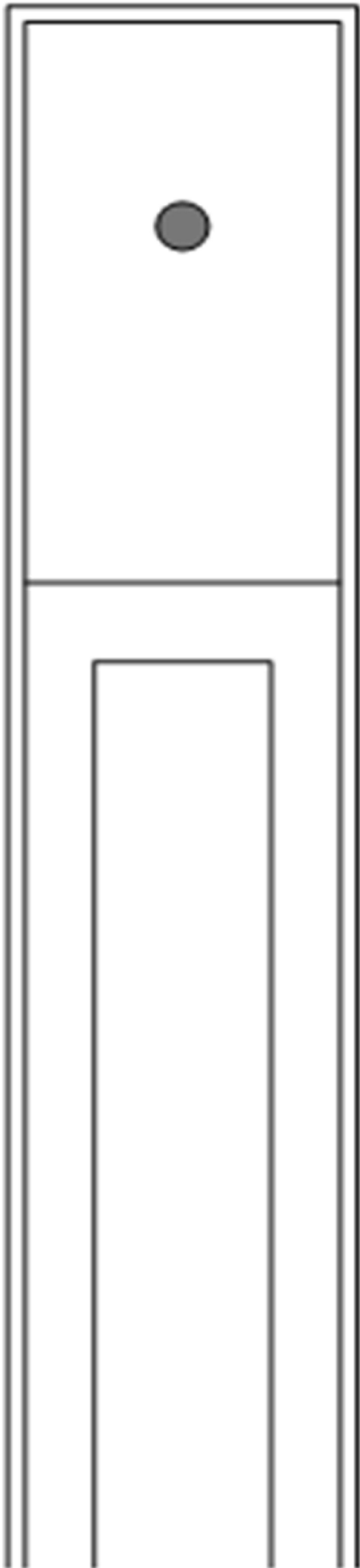
# Mittelhügel

Bahn	10
------	----



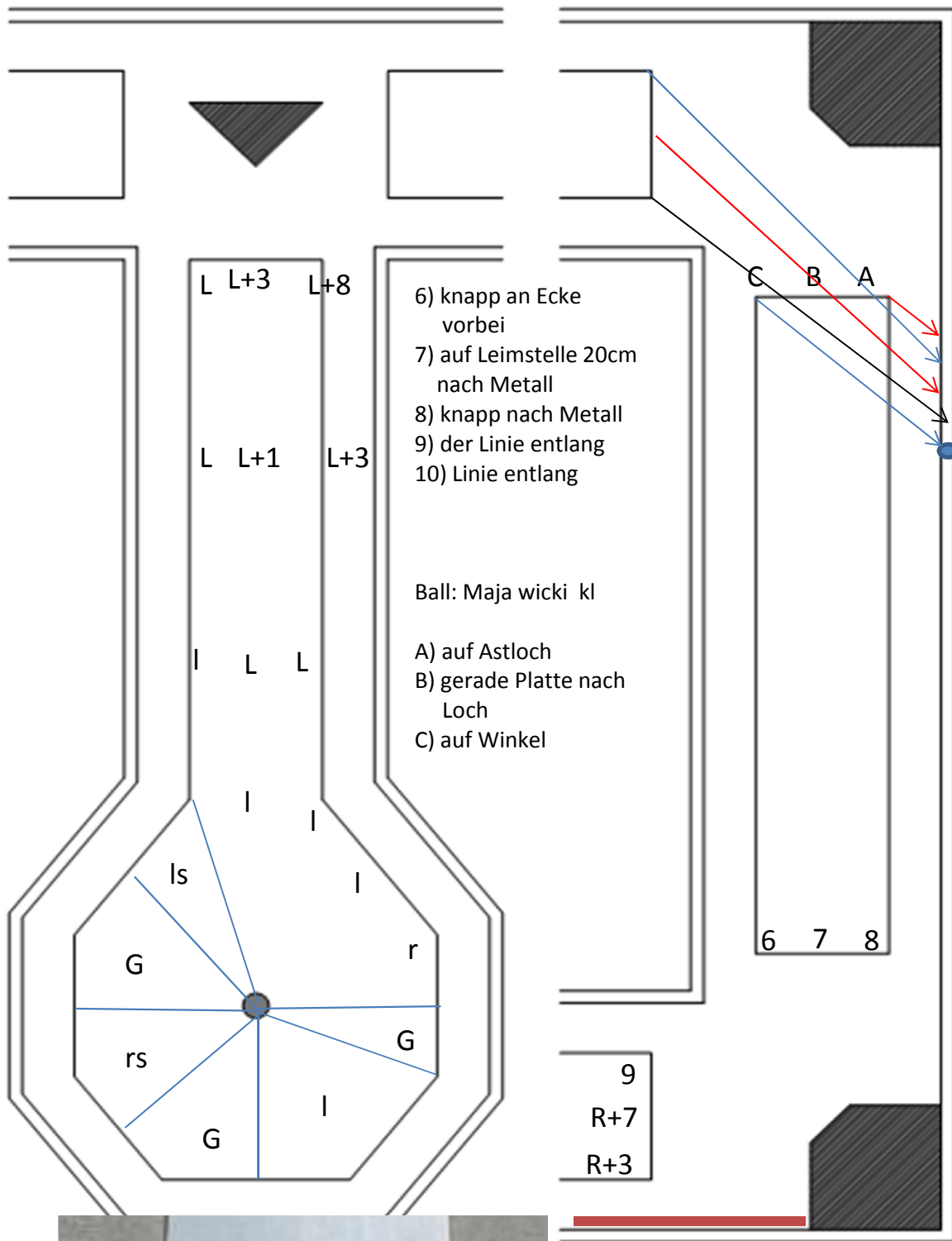
# deutscher Absatz

Bahn	11
------	----



# Winkel

Bahn 12



Metall



Gentlemen

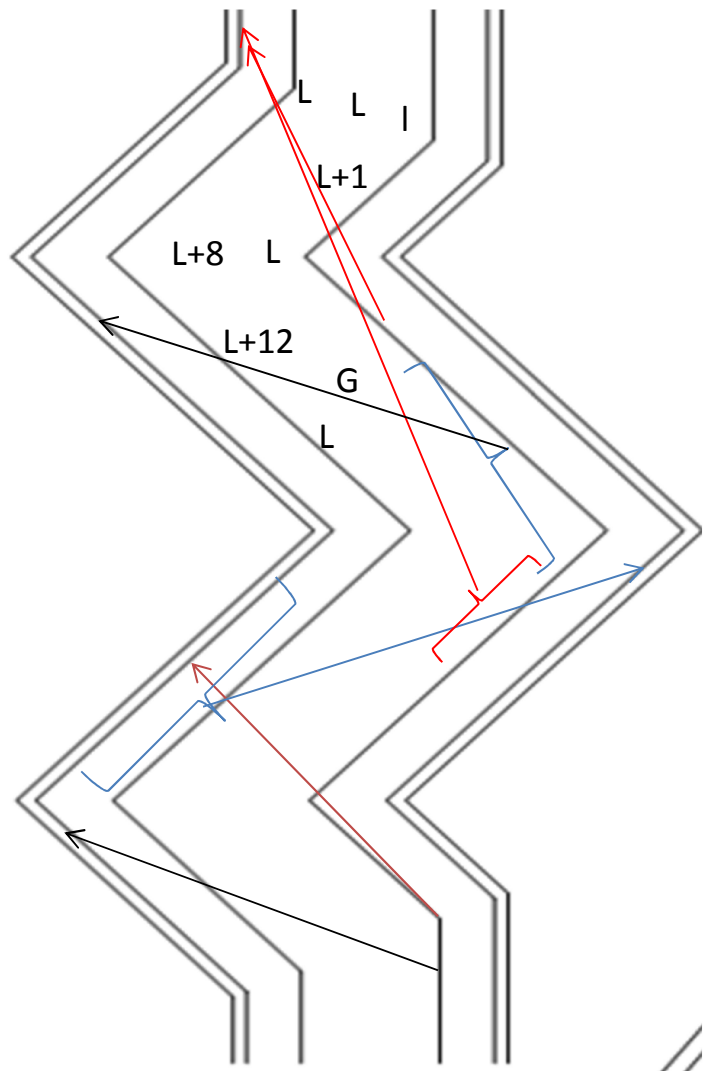
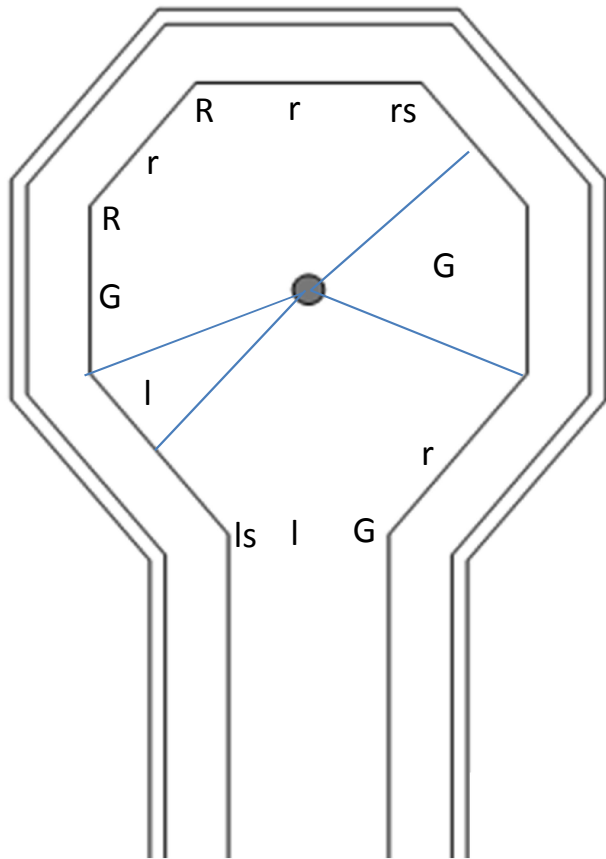
Bahn

13



Blitz

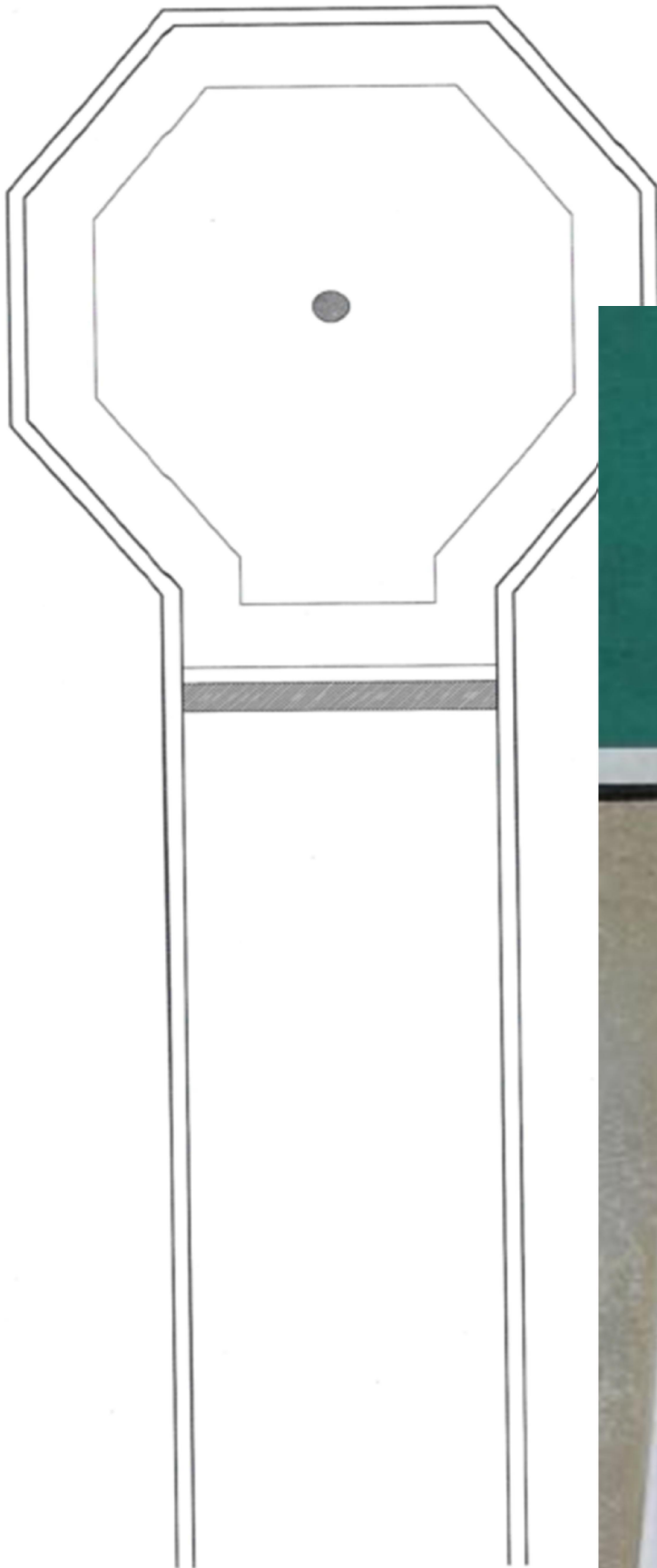
Bahn	14
------	----





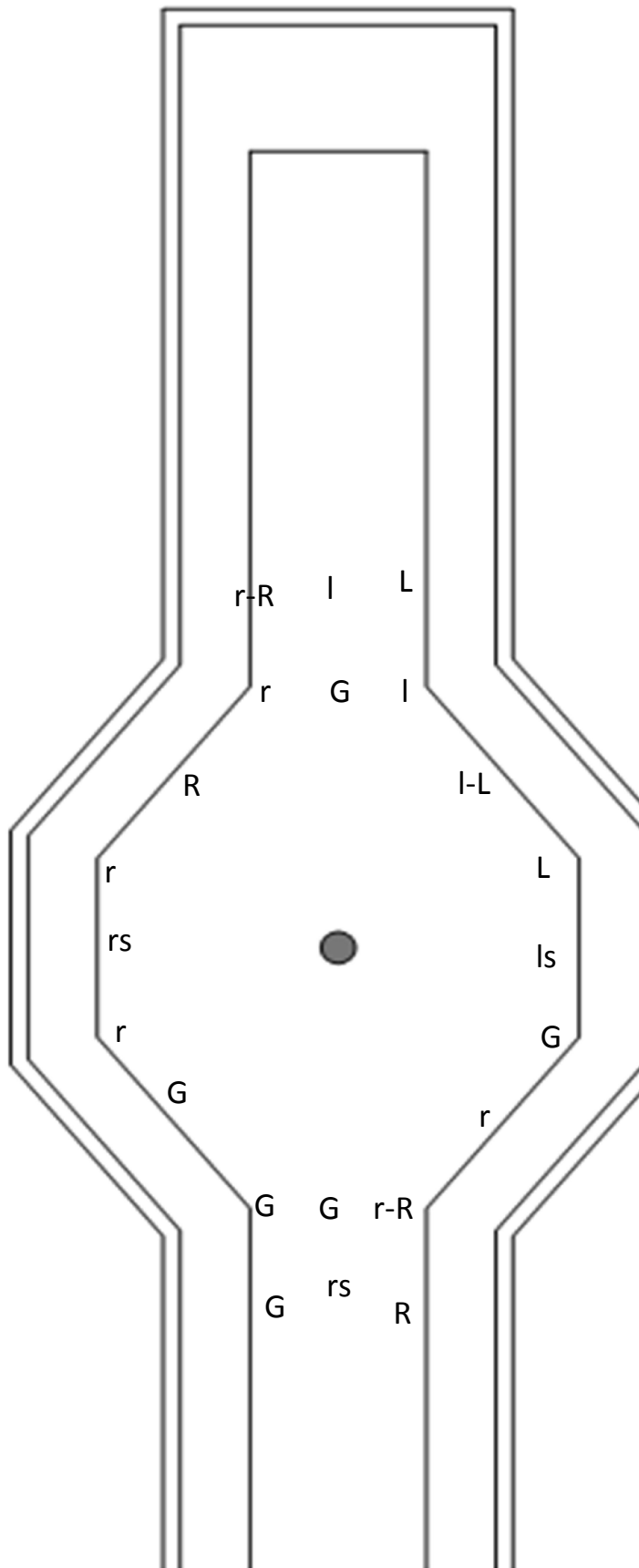
# Briefkasten

Bahn	15
------	----



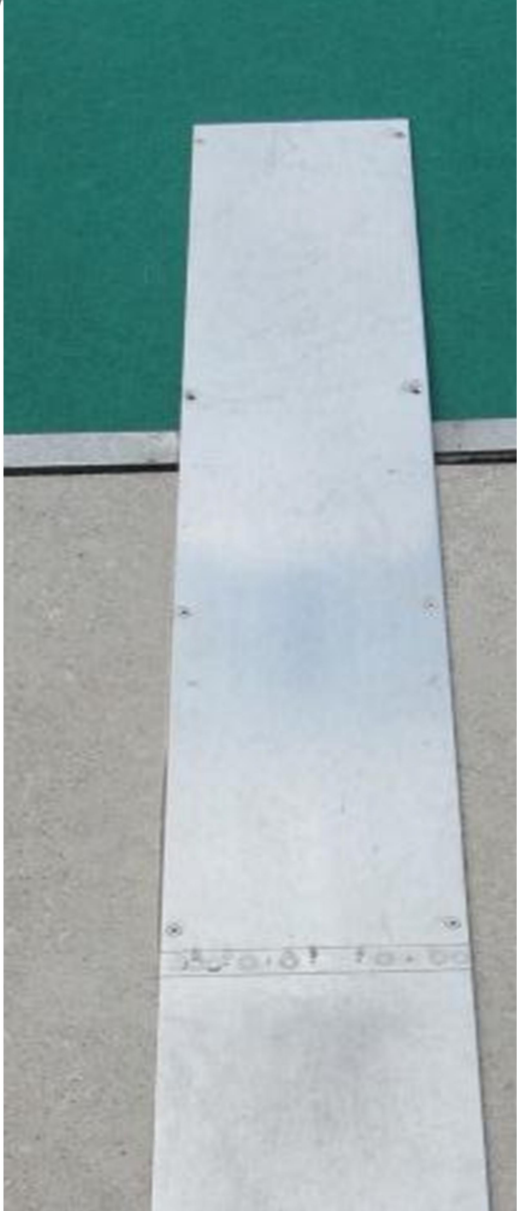
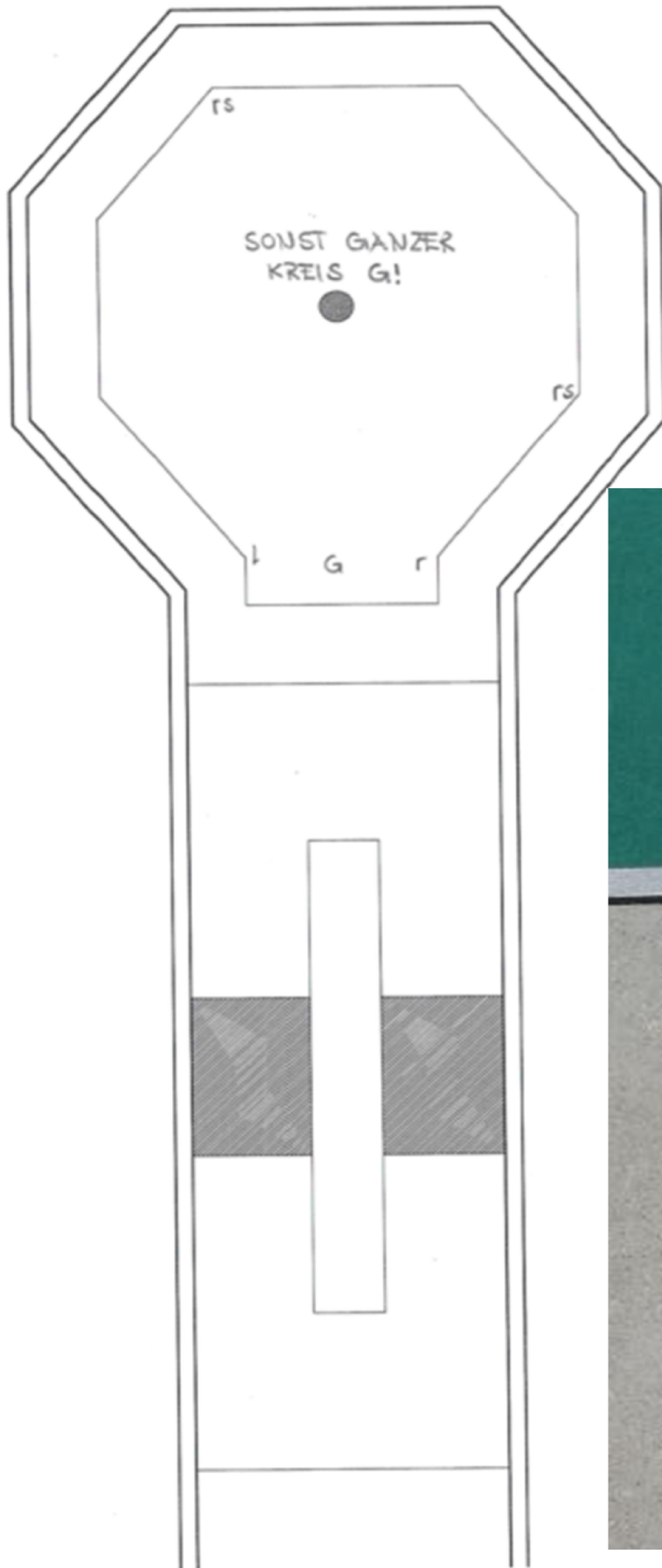
# Mittelkreis

Bahn	16
------	----



# Brücke

Bahn	17
------	----



# Assbahn

Bahn	18
------	----

