

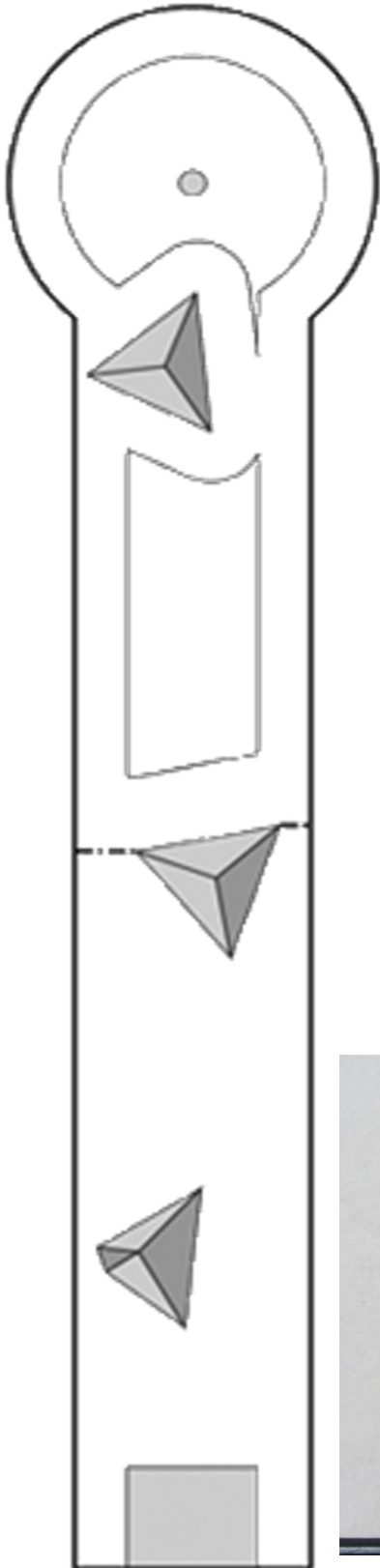
Lahti - Eternit Bahneninfos



**Senioren
Swiss - Team
2016**

Pyramiden

Bahn	1
------	---



Vulkan

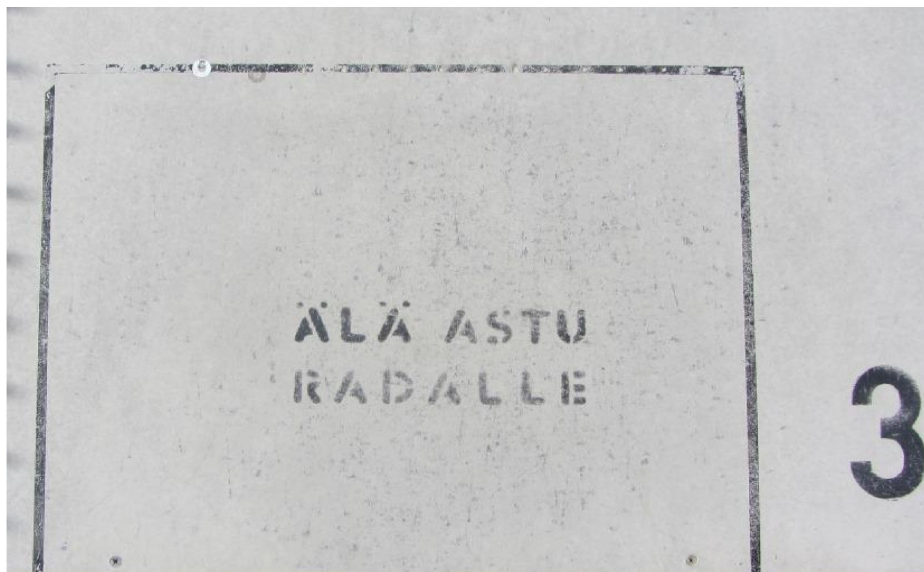
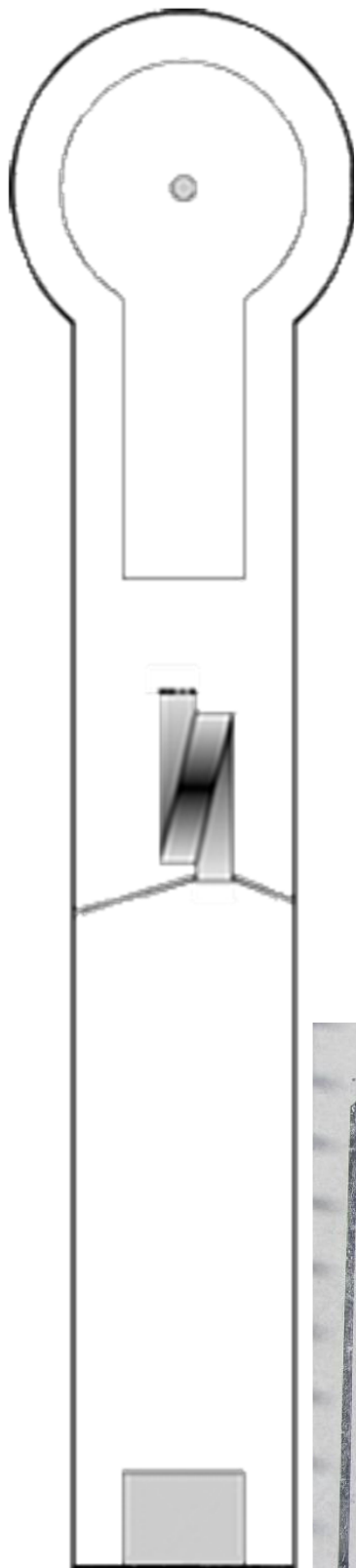
Bahn

2



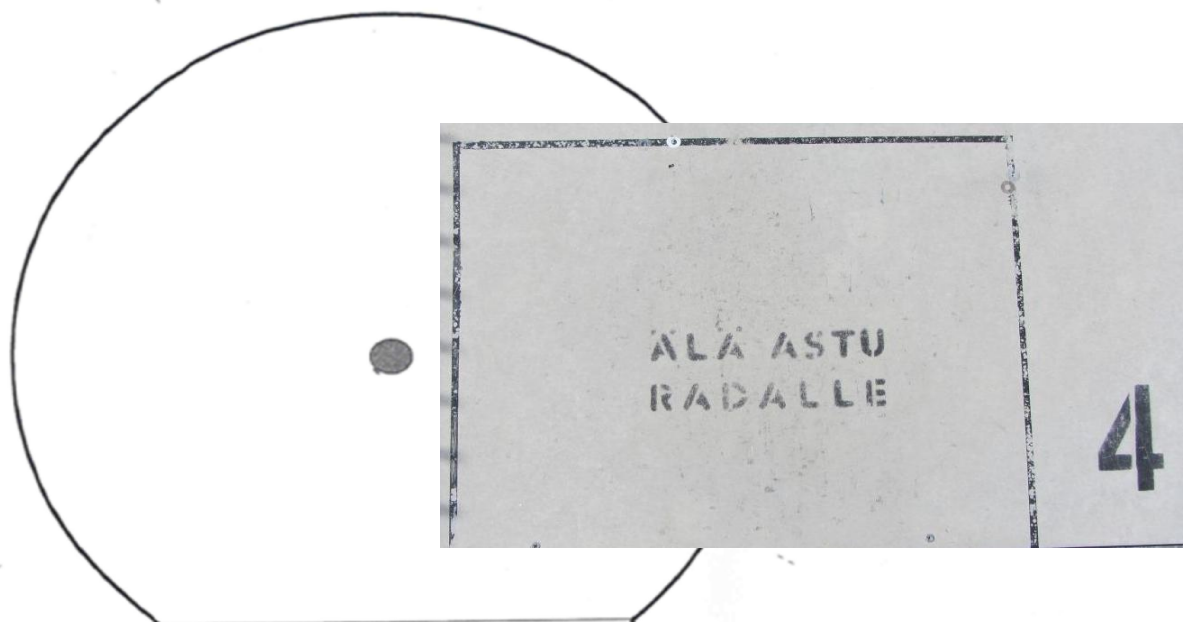
Salto

Bahn	3
------	---



Niere

Bahn	4
------	---



l G rs R-R 1*

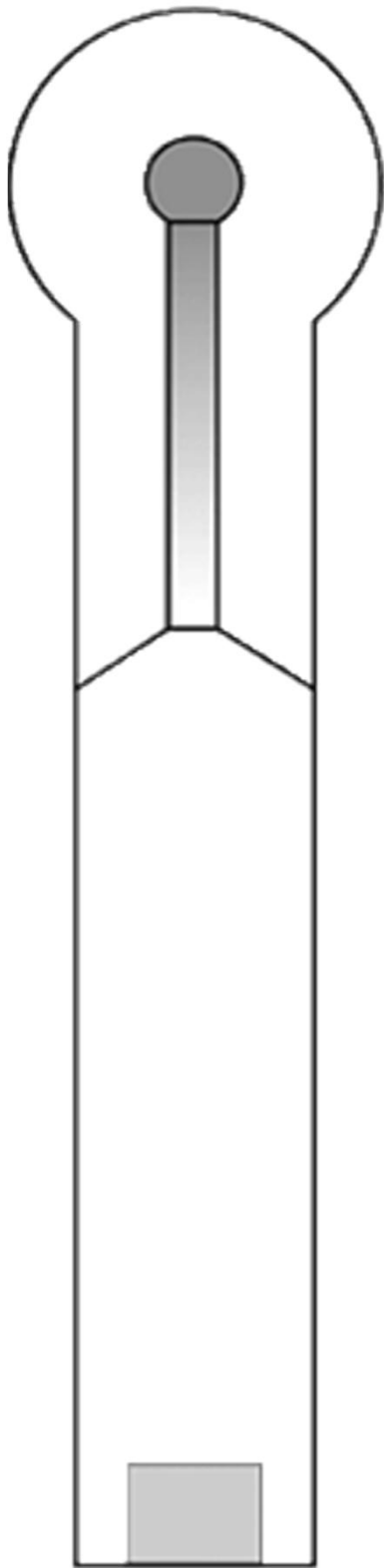
10



* NICHT FEIN
TEHPO SPIELER-/SPIELERIN
TRAINIEREN

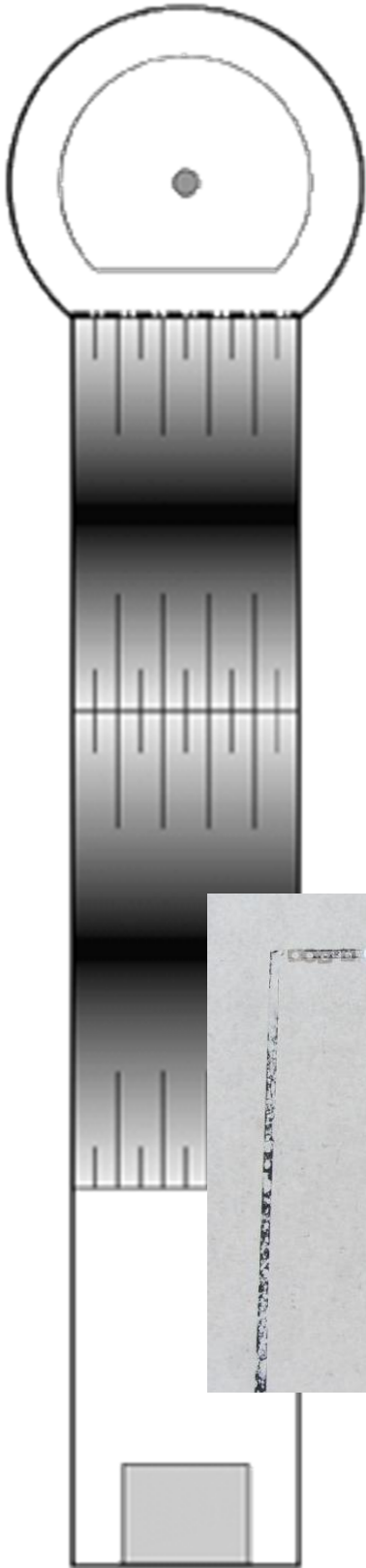
Hochplateau

Bahn	5
------	---



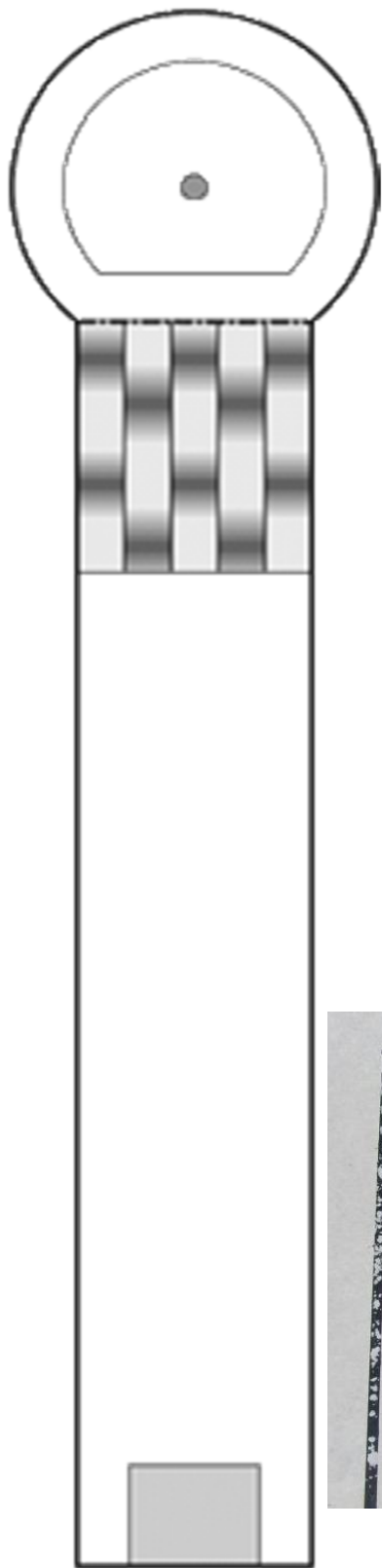
Doppelwelle

Bahn	6
------	---



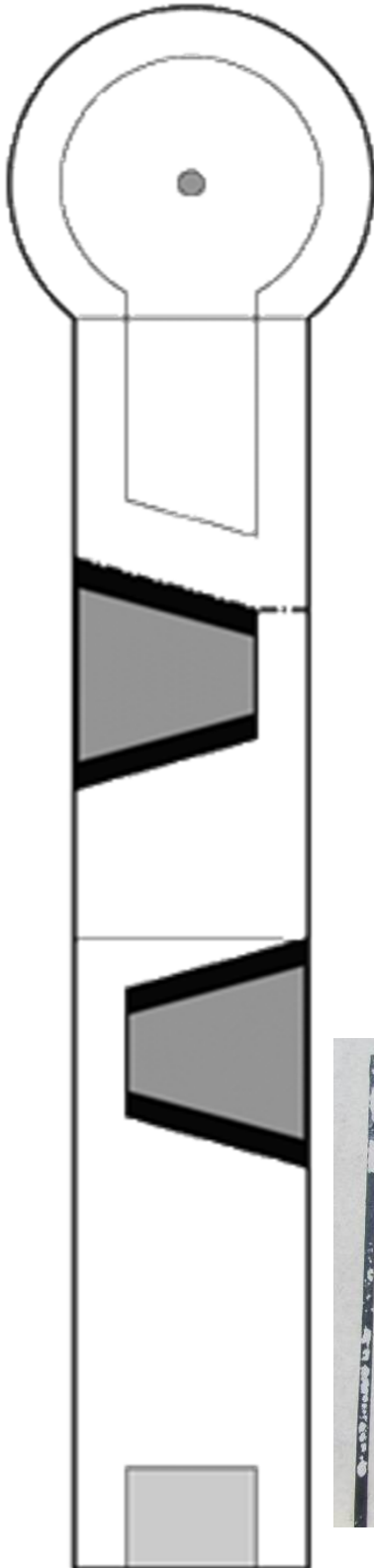
Passage

Bahn	7
------	---



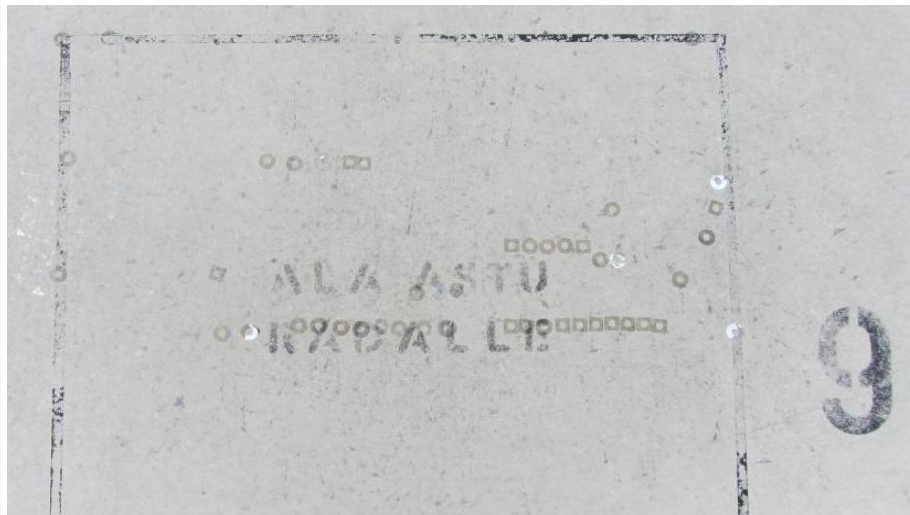
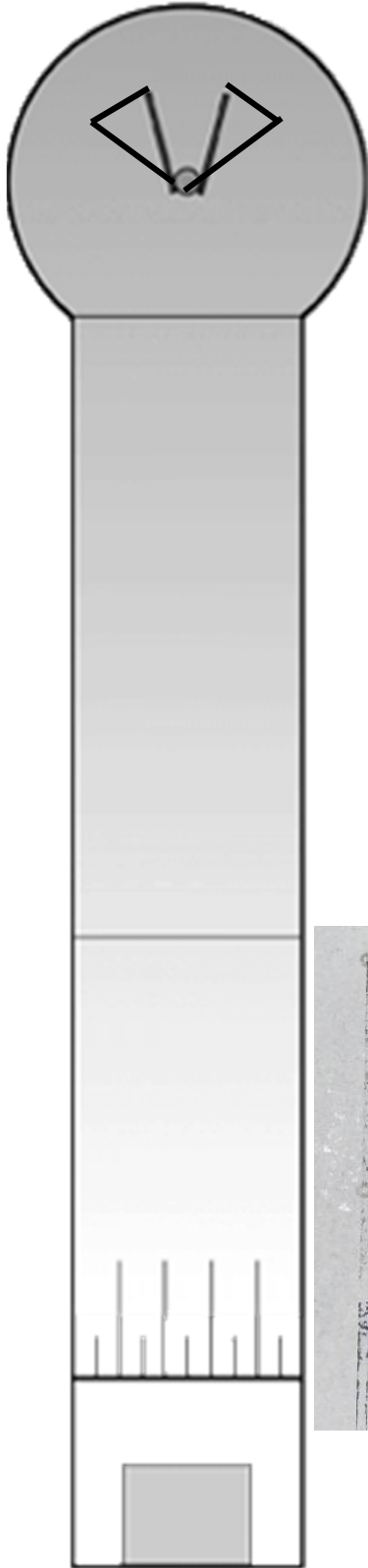
Stumpfkegel

Bahn	8
------	---



V

Bahn	9
------	---



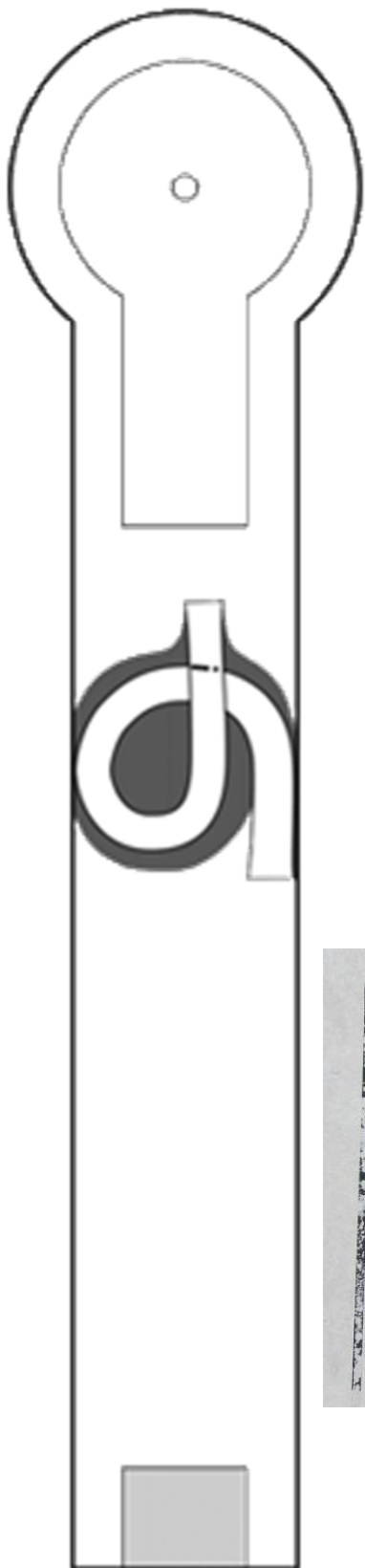
Steg

Bahn	10
------	----



Liegende Schleife

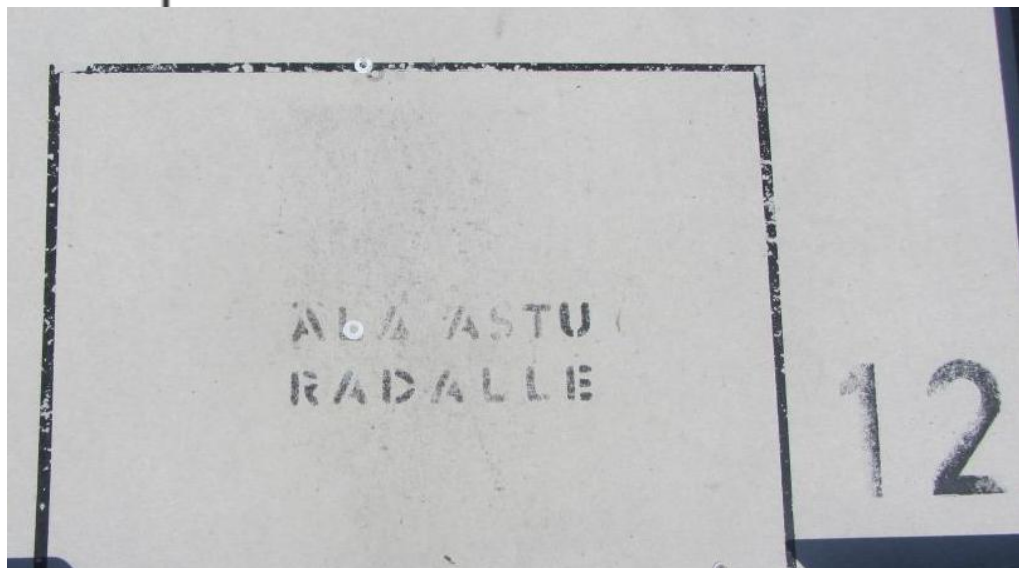
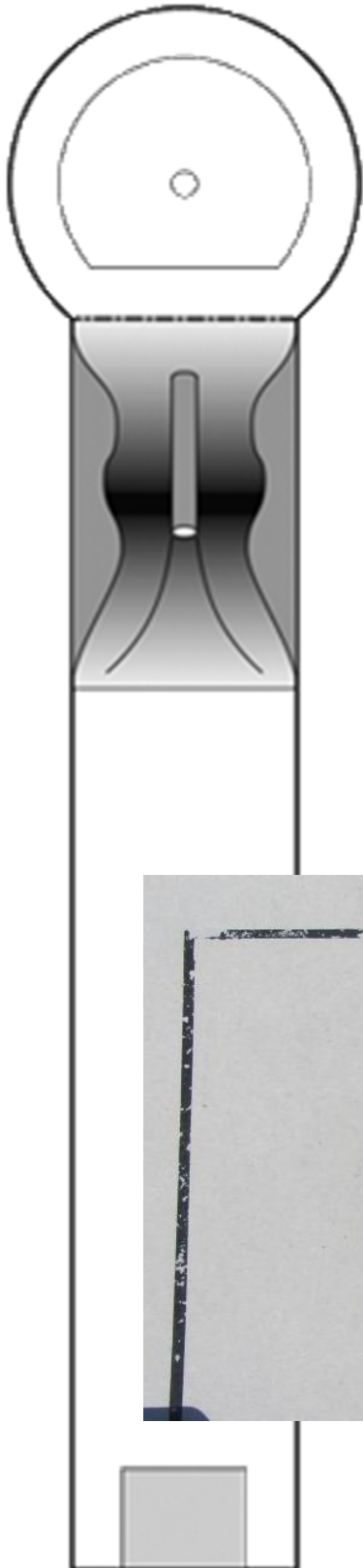
Bahn	11
------	----



Rohr

Bahn

12



Brücke

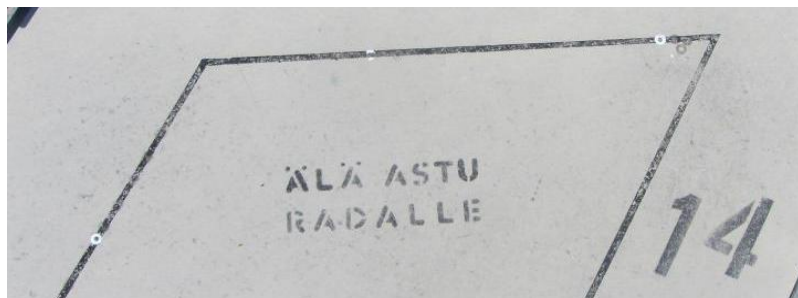
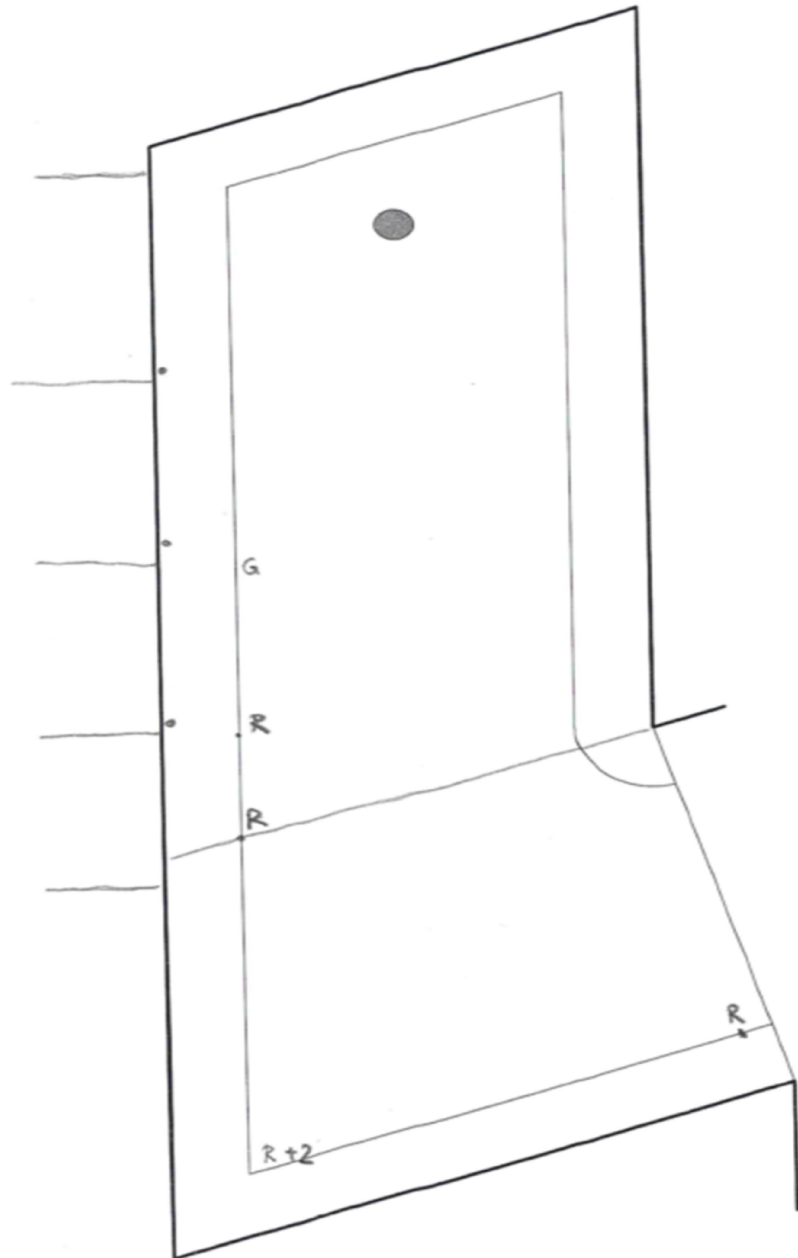
Bahn

13



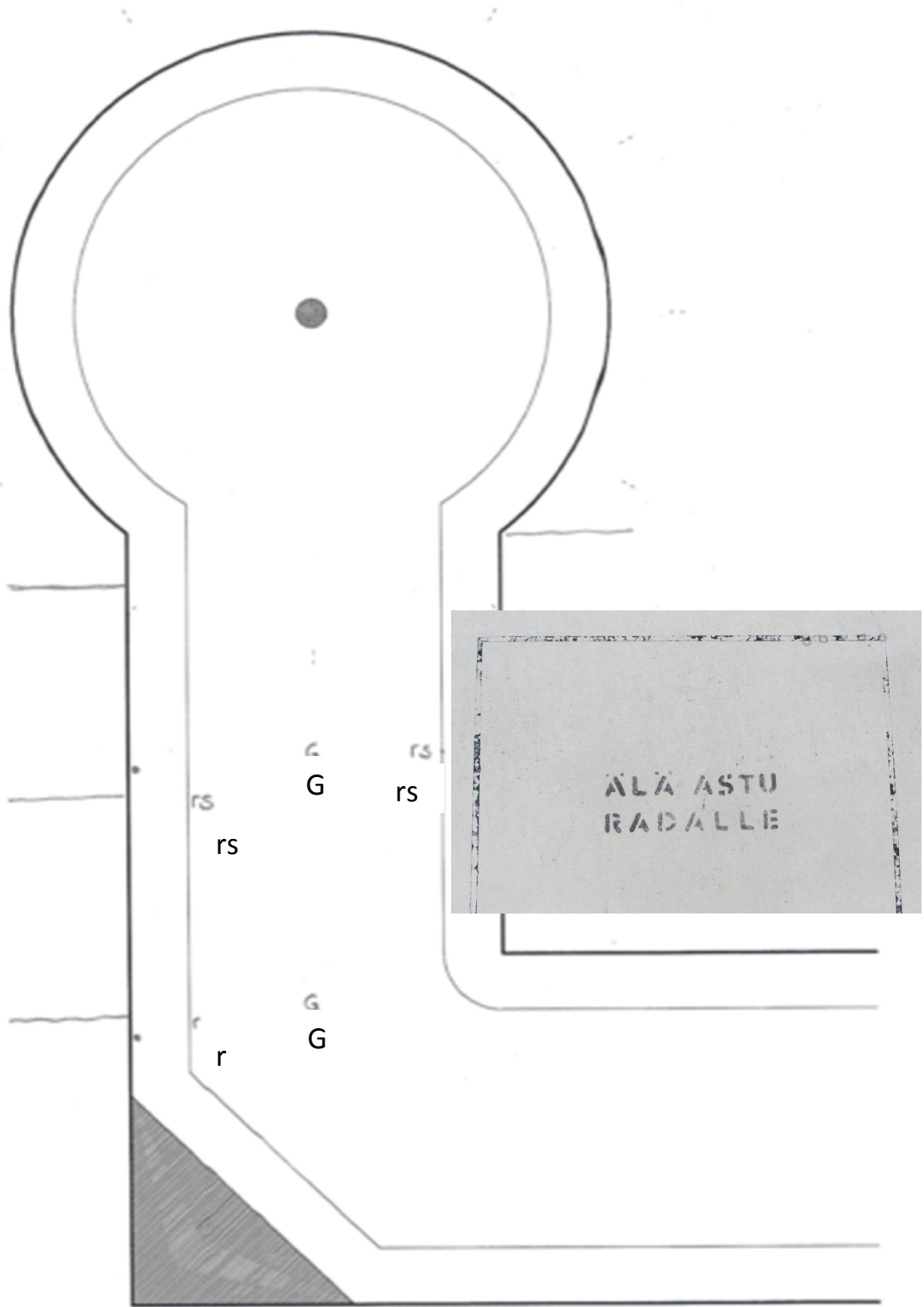
Blitz

Bahn 14

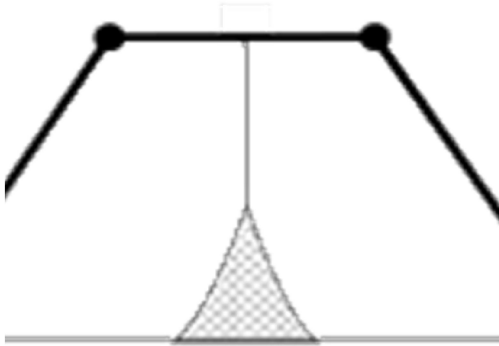


Winkel

Bahn	15
------	----

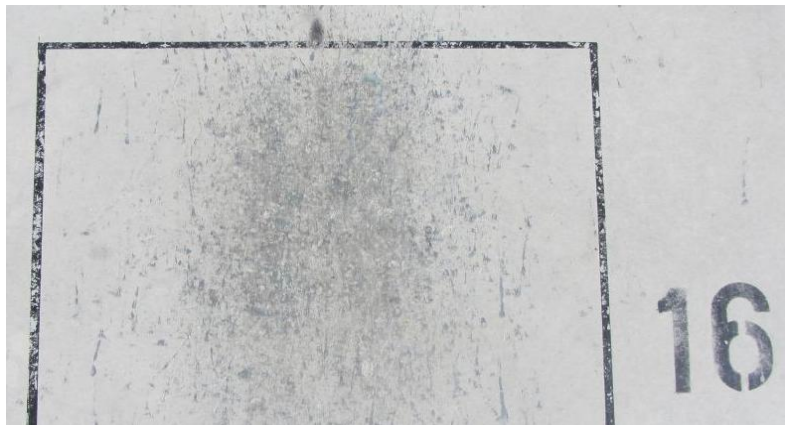
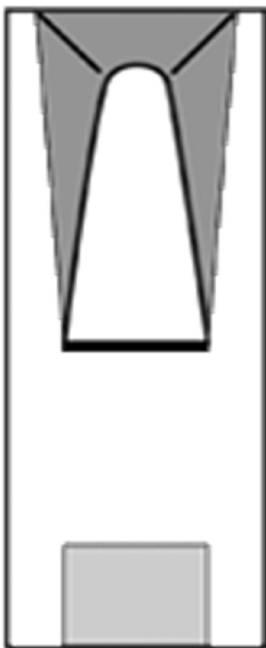


Netz



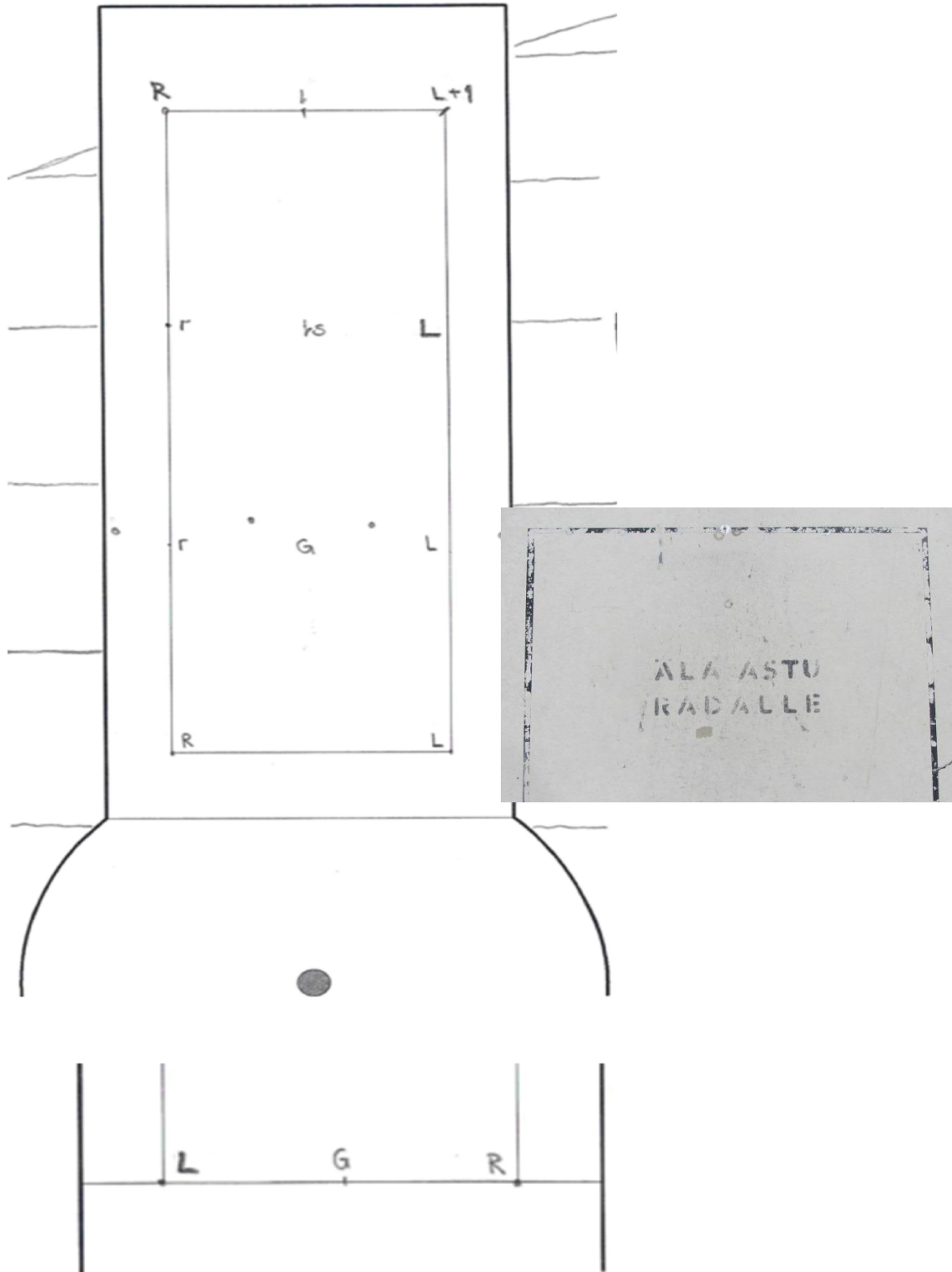
Bahn

16



Mittelkreis

Bahn	17
------	----



Labyrinth

Bahn	18
------	----

